

BUILDING BETTER GENETICS

with science and cow sense

27 SONS
AVERAGED \$6,075
IN OUR 2017
PRODUCTION SALE.

ARCHITECT SONS



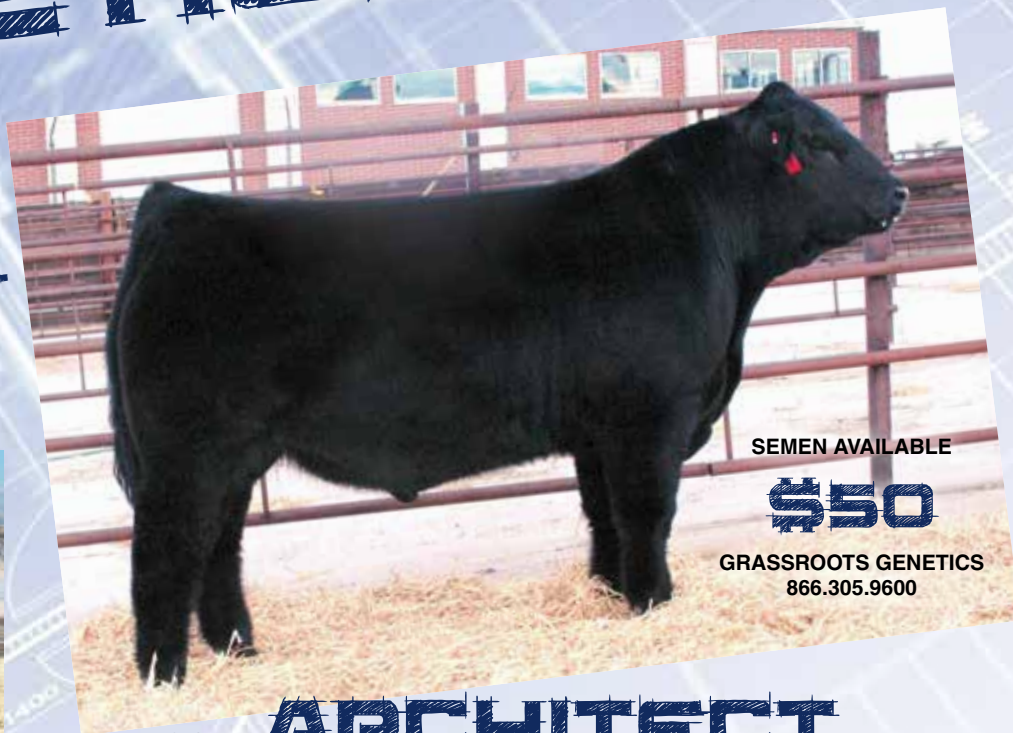
COLE Direction 55D



COLE Denver 02D



COLE Daytime 17D



COLE ARCHITECT 08A

SEMEN AVAILABLE

\$50

GRASSROOTS GENETICS
866.305.9600

HOMO Polled | Het Black | Purebred

MRL X-Rated 014X x COLE Miss Lodestar 826U

BW: 82 | Adj. WW: 766 | Adj. YW: 1,420 | Adj. REA: 17.36 | Adj. IMF: 2.53

2016 Canadian Limousin Sire of the Year

EPDs	CE	BW	WW	YW	MK	CM	SC	DC	YG	CW	RE	MB	\$MI
ACC	.59	.74	.65	.62	.43	.45	.27	.09	.24	.57	.44	.61	60

Genomically Enhanced EPDs

- Ranks in Top 1% for WW, YW, TM, CW
- Ranks in Top 15% for SC
- Ranks in Top 20% for RE
- 78 Progeny have a BR@102
- 70 Progeny have a WR@107
- 28 Progeny have a YR@103

Howard & Coy's Limousin

Howard & Coy Morgan
Box 108 • Goshen, Utah 84633
801/667-9931 • cjcattle@yahoo.com

Coleman Limousin Ranch



53717 Gallagher Road • Charlo, MT 59824
Larry & Anita Coleman • (406) 644-2300
Trent & Melissa Coleman • (406) 644-2707
www.colemanlimousinranch.com

DAUGHTERS WILL BE OFFERED OCTOBER 6

VOLUME SEMEN DISCOUNTS AVAILABLE - CONTACT OWNERS